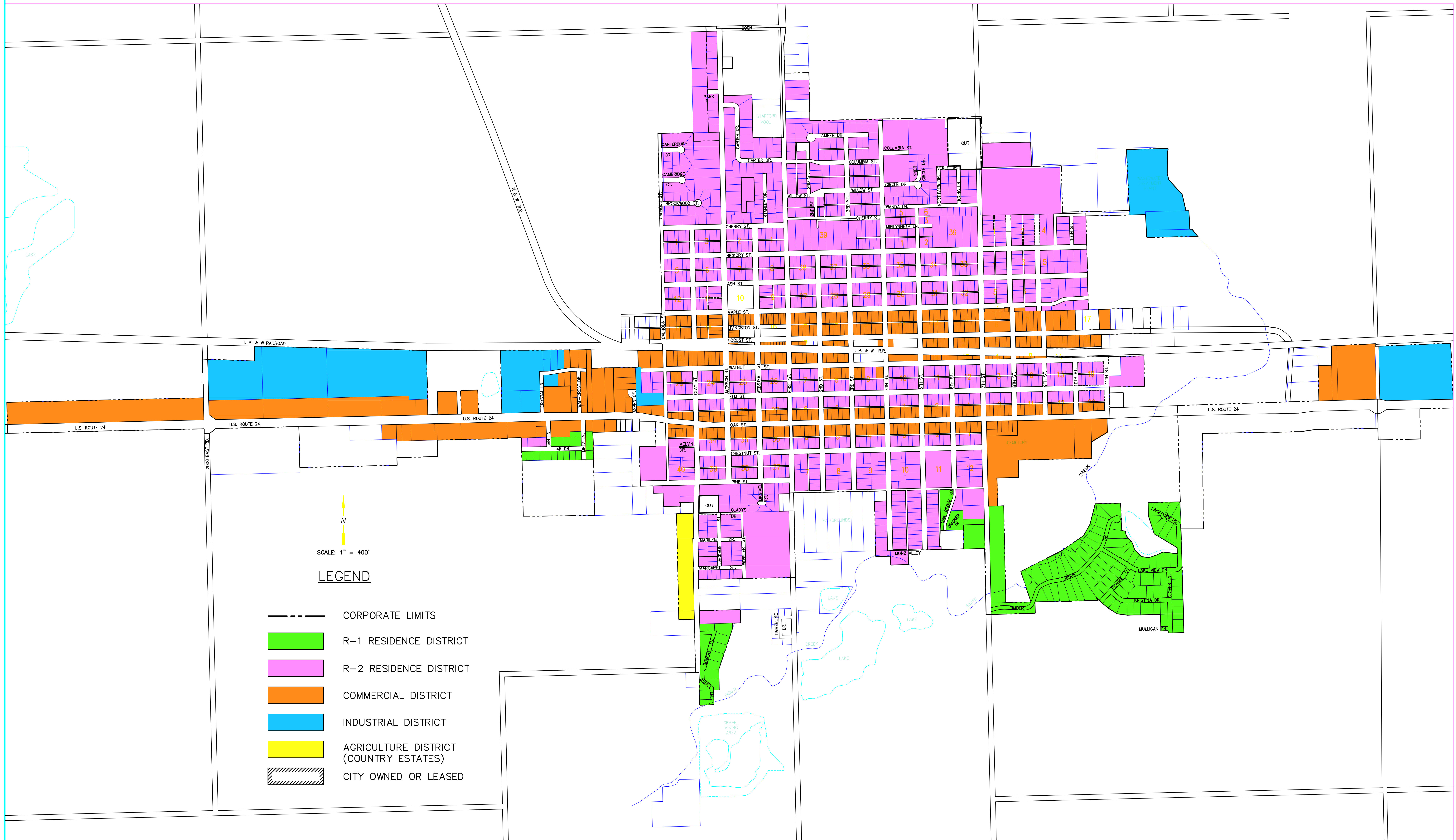





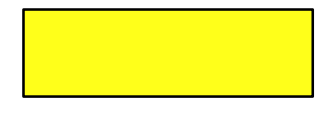
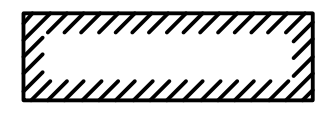



CITY OF FAIRBURY ZONING MAP



SCALE: 1" = 400'

LEGEND

-  CORPORATE LIMITS
-  R-1 RESIDENCE DISTRICT
-  R-2 RESIDENCE DISTRICT
-  COMMERCIAL DISTRICT
-  INDUSTRIAL DISTRICT
-  AGRICULTURE DISTRICT (COUNTRY ESTATES)
-  CITY OWNED OR LEASED

Revisions # Date Initials 1 05-16-07 GJS 2 07-13-07 GJS 3 07-11-11 TRF 4 04-08-15 TRF	 Farnsworth GROUP 104 NORTH SECOND STREET, SUITE A EFFINGHAM, ILLINOIS 62401 (217) 342-5668 / (217) 342-5853 Fax www.f-w.com	CITY OF FAIRBURY LIVINGSTON COUNTY, ILLINOIS ZONING MAP Sheet No.: 1 OF 1 Project No.: 000000 File No.: R-1724
Drawn: KJB Date: 05-16-07 Checked: Book No.: N/A		

I:\papers\1st\city of fairbury\2007\000000-000000-map updates\map updates\city of fairbury.mxd DATE: 3/17/2009 TIME: 9:42:37 am